



Knoxville

TENNESSEE

**AMERICA'S COLLEGE
SPORTS CITY**

BACK-TO-BACK SEC ALL-SPORTS CHAMPIONS



CONTENTS

- 3 WELCOME
- 4 WHY GIVE?
- 5 WHAT'S YOUR IMPACT?
- 6 SHAREHOLDERS SOCIETY
- 8 FOOTBALL SEASON TICKETS
- 10 FOOTBALL PARKING & MAPS
- 12 BASKETBALL SEASON TICKETS
- 13 BASKETBALL PARKING
- 14 BASEBALL & SOFTBALL SEASON TICKETS
- 16 PLANNED GIVING
- 17 MORE WAYS TO GIVE
- 19 MEET THE TEAM



SIGNIFICANT DATES

FEBRUARY

- DEADLINE FOR 2024 FOOTBALL SEASON-TICKET RENEWAL
- VOLS AND LADY VOLS BASKETBALL SEASON-TICKET RENEWAL PROCESS BEGINS

MARCH

- FOOTBALL SEASON-TICKET RELOCATION AND UPGRADE PERIOD BEGINS

APRIL/MAY

- FOOTBALL PARKING PROCESS STARTS
- FOOTBALL SEASON TICKETS DISTRIBUTED

JUNE

- DEADLINE FOR 2024-25 VOLS AND LADY VOLS BASKETBALL SEASON-TICKET RENEWAL

AUGUST

- FOOTBALL PARKING DISTRIBUTED

SEPTEMBER

- BASKETBALL PARKING PROCESS STARTS
- FOOTBALL SEASON-TICKET RENEWAL PROCESS BEGINS

OCTOBER

- VOLS AND LADY VOLS BASKETBALL SEASON-TICKETS AND PARKING DISTRIBUTED
- BASEBALL AND SOFTBALL SEASON-TICKET RENEWAL PROCESS BEGINS

NOVEMBER

- BIG ORANGE GIVE

DECEMBER

- YEAR-END GIFT DEADLINE

VOL NATION,



The 2022-23 athletic year was the best we have ever achieved across every metric here on Rocky Top! We saw numerous academic and athletic records shattered, Vol Nation's support was at an all-time high, and we captured our second straight SEC All-Sports title. The success we saw across all 20 sports programs and our progress as an athletics department are direct results of the student-athletes, coaches and Tennessee Fund donors continuously giving their all!

As an athletics department, we finished with our best finish ever in the LEARFIELD Directors' Cup, placing sixth nationally. CBS Sports named Tennessee No. 1 for the first time in its annual Best in College Sports rankings.

Tennessee became the first school to win a New Year's Six bowl game, advance its men's and women's basketball teams to the Sweet Sixteen, and send its softball and baseball teams to the College World Series in the same academic year. Tennessee also became the first school to host ESPN's College GameDay in all three sports - football, men's basketball, and women's basketball.

The momentum has continued to grow this year as Tennessee Athletics finished with its best-ever finish in the fall standings of the LEARFIELD Directors' Cup, ranking No. 5 nationally and No. 1 in the SEC.

In the classroom, Tennessee's student-athletes have raised the all-sport GPA each semester - setting all new school records each time over the last six semesters. The Fall 2023 semester saw UT student-athletes achieve a cumulative GPA of 3.40—the highest ever recorded.

The academic and competitive successes our student-athletes achieved would not have been possible without the support of Vol Nation. With a record 28,000+ donors supporting and investing in more than 600 student-athletes, the \$500 Million My All Campaign is more than 90% funded in just the second year - way ahead of schedule! The support and investment of our Tennessee Fund donors will be the driving force in providing our student-athletes with the necessary resources to allow them to compete for and win SEC and National Championships.

While it was a year to celebrate, we're just getting started and we want more! As we build on last year's many successes and continue our pursuit to return to the pinnacle of college sports, we will rely on Tennessee Fund donors and Vol Nation to propel us forward. As such, we thank you for all you have done to provide our Vols and Lady Vols the best possible student-athlete experience and for all that you will continue to do to help transform Tennessee Athletics into the best athletic department in the country.

- DR. DANIEL J. WHITE
VICE CHANCELLOR AND DIRECTOR OF ATHLETICS

WHY GIVE?

600+ ACTIVE STUDENT-ATHLETES

23 TEAM NCAA CHAMPIONSHIPS

208 TEAM CONFERENCE CHAMPIONSHIPS

20 SPORTS

94% GRADUATION SUCCESS RATE

404 SEC ACADEMIC HONOR ROLL MEMBERS IN 2022-23

3,450 HOURS OF LEADERSHIP DEVELOPMENT TRAINING

3,500+ VOLUNTEER HOURS

STUDENT-ATHLETES CONFIRMED TO HAVE POST-GRAD PLANS IN 2022-23

Grad school or full-time jobs, military, medical school or full-time internship

98%

BACK-TO-BACK SEC ALL-SPORTS CHAMPIONS

2022-23

FINISH IN LEARFIELD DIRECTORS' CUP RACE FOR THE 2022-23 SEASON

#6

best-ever ranking in nationwide all-sports competition

WHAT'S YOUR IMPACT?

STUDENT-ATHLETE EXPERIENCE

AVERAGE ANNUAL INVESTMENT

TOTAL AVERAGE:

\$132,677.75

To compete nationally, the University of Tennessee must ensure that the top in-state recruits are choosing to play for the Volunteers and Lady Volunteers, while also attracting the best national recruits.

With scholarship costs rising nationally, it is imperative that the Tennessee Fund increases both memberships and gifts to cover these costs. Every member and dollar count toward making the student-athlete dream become a reality. The education and life lessons our student-athletes receive are priceless. Please consider increasing your gift or referring a friend to the Tennessee Fund.

SCHOLARSHIP* **\$53,255.10**

TRAVEL **\$30,208.67**

EQUIPMENT **\$11,585.32**

SPORTS MEDICINE/MENTAL HEALTH **\$7,496.34**

STUDENT-ATHLETE STIPEND** **\$5,038.58**

ACADEMIC ACHIEVEMENT AWARD **\$5,980.00**

ACADEMIC SUPPORT **\$5,444.55**

NUTRITION **\$9,353.16**

STRENGTH & CONDITIONING **\$3,476.62**

SPORTS SCIENCE **\$839.41**

**Includes tuition, room and board*

***Includes summer school*

Data based on the following projections: Average student-athlete expenses for FY22-23 based on 538 total student-athletes and 260.20 scholarships (80% out-of-state, 20% in-state).

HOW ARE YOUR ANNUAL FUND CONTRIBUTIONS SPENT?

Seat-based and parking-based priority fund contributions primarily help in funding the day-to-day operations of the athletic department and its 20 sport programs. Priority fund seat contributions tied to season tickets support in funding the total cost of providing a first-class experience for Tennessee student-athletes. The expenses covered by priority seat contributions include student-athlete scholarships, academic support, travel, strength & conditioning, mental health resources, and many more necessities to ensure our student-athletes are achieving at the highest levels in the classroom and in competition.

THE
MY ALL
 CAMPAIGN

The My All Campaign aims to impact each of Tennessee's 20 varsity athletic programs by providing championship resources to support student-athletes' academic and competitive pursuits. Campaign funds will ultimately allow for strategic investments impacting every athletic program on campus.

TENNESSEEFUND.ORG | 865.974.1218 | TNFUND@UTK.EDU

THE SHAREHOLDERS SOCIETY

Established in 2021, the Shareholders Society is the exclusive philanthropic giving society for Tennessee Athletics. This group of generous and committed donors provide critical financial support for our student-athletes and coaches, helping enhance their experience at Tennessee through philanthropy.

Commitments to the Shareholders Society will be used to fund new athletic facility construction, as well as existing facility enhancements/renovations. Through their generosity and transformational support, Society members will bolster Tennessee's championship capacity across all 20 varsity sports.

Since founded, the Shareholders Society has grown to more than 700 members. As Tennessee Athletics aims to lead the way in all aspects of college sports, we intend to continue growing this Society and utilizing this exclusive group of philanthropic leaders to transform our athletic department.



SHAREHOLDERS SOCIETY ENGAGEMENT OPPORTUNITIES



SHAREHOLDERS MEMBERSHIP BENEFITS

Society members with five-year commitments will be appropriately stewarded with exclusive, unique engagement opportunities commensurate with their level of giving. *Opportunities may include but are not limited to:*

- Access to exclusive events
- Pregame/in-game field passes
- Branded society gear
- Opportunities to attend practices
- Annual Society trip to away games
- Accelerated donor points
- Tax-deductible gifts

FIVE-YEAR LEADERSHIP COMMITMENT LEVELS

\$25,000 1.5 points/\$100	\$50,000 1.5 points/\$100	\$100,000 2 points/\$100	\$250,000 2 points/\$100	\$500,000 3 points/\$100	\$1,000,000 3 points/\$100
------------------------------	------------------------------	-----------------------------	-----------------------------	-----------------------------	-------------------------------

PRIORITY POINT ESCALATOR

FOOTBALL

SEASON TICKET INFORMATION



Prices listed include the season-ticket cost and the required contribution. Contributions tied to season tickets are not tax deductible.

Ticket prices do not include state and local sales tax and city amusement tax. Total taxes equate to 13.75% of a ticket price and are added to the ticket price at the time of purchase.

PREMIUM				
SECTION	TICKET	LICENSE	CONTRIBUTION	TOTAL
WEST CLUB	\$450	\$400	\$5,150	\$6,000
EAST CLUB	\$450	\$400	\$4,150	\$5,000
TERRACE	\$450	\$150	\$2,900	\$3,500
LOWER WEST CLUB	\$450	\$150	\$4,000	\$4,600

STANDARD			
SECTION	TICKET	CONTRIBUTION	TOTAL
LOWER WEST CHAIR	\$450	\$2,050	\$2,500
WEST MIDFIELD BLEACHER	\$450	\$2,050	\$2,500
WEST SIDELINE BLEACHER	\$450	\$1,050	\$1,500
EAST MIDFIELD BLEACHER	\$450	\$1,050	\$1,500
UPPER ENDZONE CHAIRBACKS + SOUTH LOWER CHAIRBACKS	\$450	\$1,050	\$1,500
EAST SIDELINE BLEACHER	\$450	\$550	\$1,000
LOWER ENDZONE BLEACHER BELOW WALKWAY	\$450	\$300	\$750
LOWER ENDZONE BLEACHER ABOVE WALKWAY + UPPER EAST MIDFIELD	\$450	\$250	\$700
UPPER NORTH CHAIRBACKS	\$450	\$200	\$650
UPPER BLEACHER	\$450	\$100	\$550
UPPER SOUTH - ROW 16 & ABOVE	\$450	\$50	\$500
FAMILY SECTION	\$300	\$50	\$350
DECK	\$450	\$1,500	\$1,950
STUDENT SECTION	--	--	--
VISITORS	--	--	--

These contribution amounts do not guarantee seats in Neyland Stadium. The listed annual contribution levels are to provide Tennessee Fund members with an idea of the approximate amount required to sit in a specific section. All prices listed include a season ticket and any additional contribution cost. Seating locations are subject to change as needed due to future renovations of Neyland Stadium. In addition, the cost of season tickets may vary on an annual basis.

Premium seating options within Neyland Stadium may involve a philanthropic capital investment. One-time capital gifts will increase donor rank and priority. If you would like more information on football premium seats, please contact the Tennessee Fund at tnfund@utk.edu.

NEYLAND STADIUM

PREMIUM SEATING

Premium seating at the University of Tennessee is a great way to take a leadership role in supporting the Vols while enjoying the best seats in Neyland Stadium.

We anticipate many of our premium seating areas to be sold out for the 2024 season. To inquire about availability or to join a premium seating waitlist, please email tnfund@utk.edu.



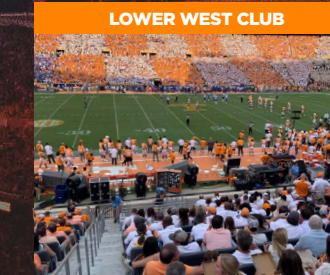
- 16 climate-controlled seats
- Private refrigerator, wet bar and lockable cabinets
- Adjoining lounge with all-inclusive food and non-alcoholic beverages
- Elevator access



- Covered, luxurious chairback seats
- Private indoor club area
- All-inclusive food and non-alcoholic beverages
- TVs showing Tennessee Football and college football from around the country
- Elevator access
- Alcohol and spirits available for purchase



- Chairback seats with cup holders & additional leg room
- Climate-controlled indoor concourse
- Expanded concession menu with TVs showing Tennessee Football and college football from around the country
- Family restrooms
- Elevator access
- Alcohol and spirits available for purchase



- Chairback seats with cup holders & additional leg room
- Climate-controlled indoor concourse
- Expanded food and beverage options with TVs and a bar-seating experience
- Family restrooms
- Elevator access
- Alcohol and spirits available for purchase

Premium seating options within Neyland Stadium may involve philanthropic capital investments to assist in our funding model. As such, one-time capital gifts will increase donor rank and priority and may be involved with purchase of season tickets in this location. If you would like more information on football premium seats, please contact the Tennessee Fund at tnfund@utk.edu.

FOOTBALL PARKING

NEW IN 2024!

Beginning with the 2024 season, Tennessee Athletics is implementing a more simplified parking process. The impending changes stem from more than a year of careful analysis and research, SEC and national peer benchmarking, and much internal discussion.

3 Key Changes of the Parking Model

- 1 Donor Rank**
The donor's parking location will be determined by Tennessee Fund donor rank.
- 2 Quantity of Parking Passes**
Accounts with non-premium season tickets will have their parking eligibility and quantity of parking passes determined by the number of tickets on their account.
- 3 Parking Location Lock**
Starting with the 2025 season, parking locations will be locked-in for three consecutive football seasons. Donors will "renew" their parking pass for the 2026 and 2027 seasons. We will go through another donor selection process, for the 2028 season.

# of Non-Premium Season Tickets	Passes Allowed
4-7	1
8-11	2
12-15	3
16-19	4

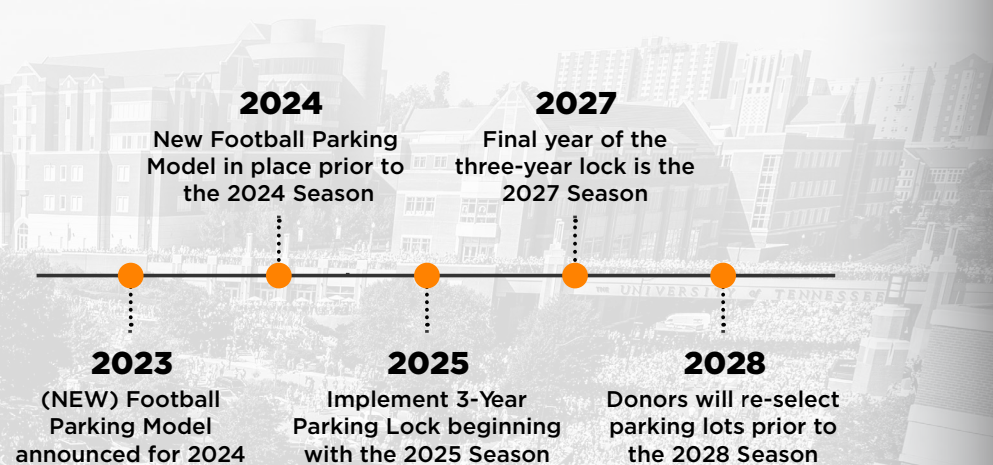


Important Notes:

*If an account has less than 4 non-premium season tickets but has a donor rank below 1,000, they will be able to request 1 pass in a Tier 1 or Tier 2 parking location.

*Accounts with less than 4 non-premium season tickets, that are ranked above 1,000, will be able to request 1 pass but in a Tier 2 parking location.

The new model will maintain premium parking qualifications for the Skybox, West Club, East Club, Lower West Club, and Tennessee Terrace. Premium season ticket holders can request a Tier 1 or Tier 2 lot. These passes will be allocated in donor rank order.



For more information on the football parking process, please visit <https://www.tennesseefund.org/2024-football-parking/>

TIER 1 LOTS

- Circle Park
- 9
- 9B
- C15
- G5/30
- 30A
- G10
- G10T
- G3
- G1
- G4
- 7A
- 23B
- G16
- 22
- RecSports
- 25
- 11th St. Garage
- C21 White Avenue Garage



TIER 2 LOTS

- G17
- AG Campus
- Lot 14
- Locust St. Garage
- Lot 40
- UT Creamery

Parking passes are based on availability and are not guaranteed with purchase of season tickets.



All lots are subject to change

BASKETBALL



MEN'S BASKETBALL			
SECTION	TICKET	CONTRIBUTION	TOTAL
FLOOR - SIDECOURT	\$825	\$4,675	\$5,500
FLOOR - ENDCOURT	\$825	\$4,175	\$5,000
SIDECOURT - 100 LEVEL	\$325	\$1,425	\$1,750
SIDECOURT - 200 LEVEL	\$325	\$1,425	\$1,750
CORNER	\$250	\$1,250	\$1,500
ENDCOURT	\$250	\$750	\$1,000
LEVEL 300	\$250	\$250	\$500
LEVEL 300	\$325	\$50	\$375
FAMILY SECTION, LEVEL 300	\$250	\$50	\$300
STUDENT SECTION	--	--	--



WOMEN'S BASKETBALL			
SECTION	TICKET	CONTRIBUTION	TOTAL
FLOOR	\$700	\$300	\$1,000
SIDECOURT	\$200	\$150	\$350
CORNER	\$200	--	\$200
ENDCOURT	\$100	--	\$100
STUDENT SECTION	--	--	--

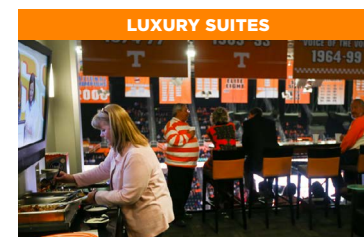
Prices listed include the season ticket cost and the required seat contribution to the Men's or Women's Basketball priority fund. Contributions tied to season tickets are not tax deductible.

Ticket prices do not include state and local sales tax and city amusement tax. Total taxes equate to 13.75% of a ticket price and are added to the ticket price at the time of purchase.

THOMPSON-BOLING ARENA AT FOOD CITY CENTER

PREMIUM SEATING

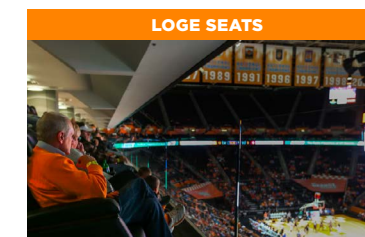
Premium seating options within Thompson-Boling Arena at Food City Center may involve philanthropic capital investments to assist in our funding model. As such, one-time capital gifts will increase donor rank and priority and may be involved with purchase of season tickets in this location. If you would like more information on basketball premium seats, please contact the Tennessee Fund at tnfund@utk.edu.



- 10, 12 or 16 seat private suites
- Includes Vols and Lady Vols parking passes
- Private refrigerator and locked cabinets & wet bar
- First opportunity to purchase suite tickets for other Thompson-Boling Arena at Food City Center events



- Located just off the court on the east and west baselines in rows A & B
- Parking pass included per pair of floor season tickets
- Includes access to the Harper Auto Square Courtside Club
- All-inclusive food and non-alcoholic beverages



- Luxurious leather chairback seats
- Includes Vols and Lady Vols parking passes
- Wait service provided
- First opportunity to purchase loge tickets for other Thompson-Boling Arena at Food City Center events



- Located just off the court directly across from the team benches
- Parking pass included per pair of floor season tickets
- Includes access to the Harper Auto Square Courtside Club
- All-inclusive food and non-alcoholic beverages

BASKETBALL PARKING

NEW FOR THE 2024-25 SEASON

Beginning with the 2024-25 basketball season, Tennessee Athletics is implementing a more simplified parking process for men's and women's basketball. The impending changes stem from more than a year of careful analysis and research, SEC and national peer benchmarking, and much internal discussion.

The new parking model will maintain premium parking qualifications for the suites, loge, and floor seats.

Parking passes are based on availability and are not guaranteed with purchase of season tickets.

3 Key Changes of the Parking Model

- 1 Donor Rank**
The donor's parking location will be determined by Tennessee Fund donor rank.

- 2 Quantity of Parking Passes**
Accounts with non-premium season tickets will have their parking eligibility and quantity of parking passes determined by the number of tickets on their account.

# of Non-Premium Season Tickets	Passes Allowed
2-4	1
5-8	2
9-12	3
13-17	4
18+	5



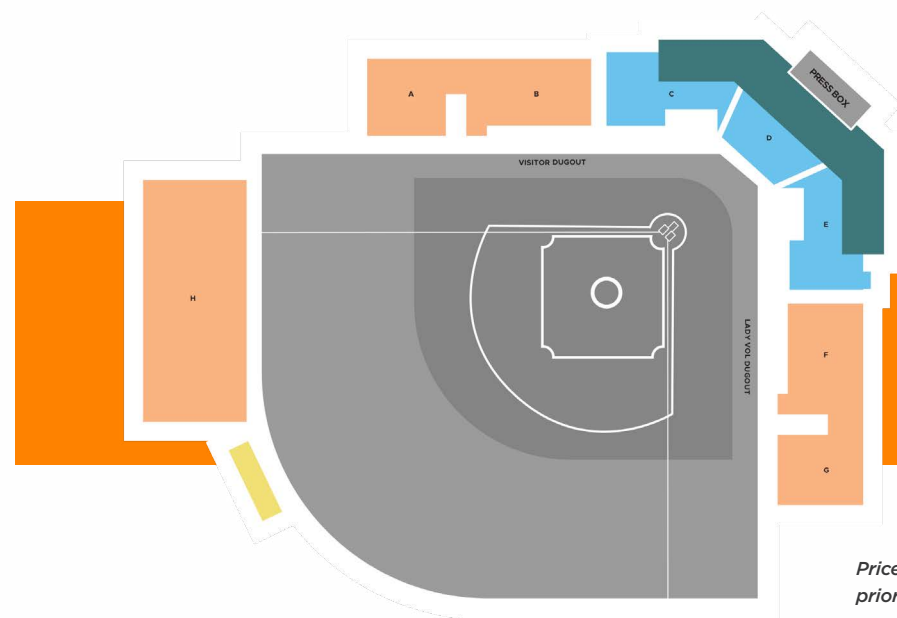
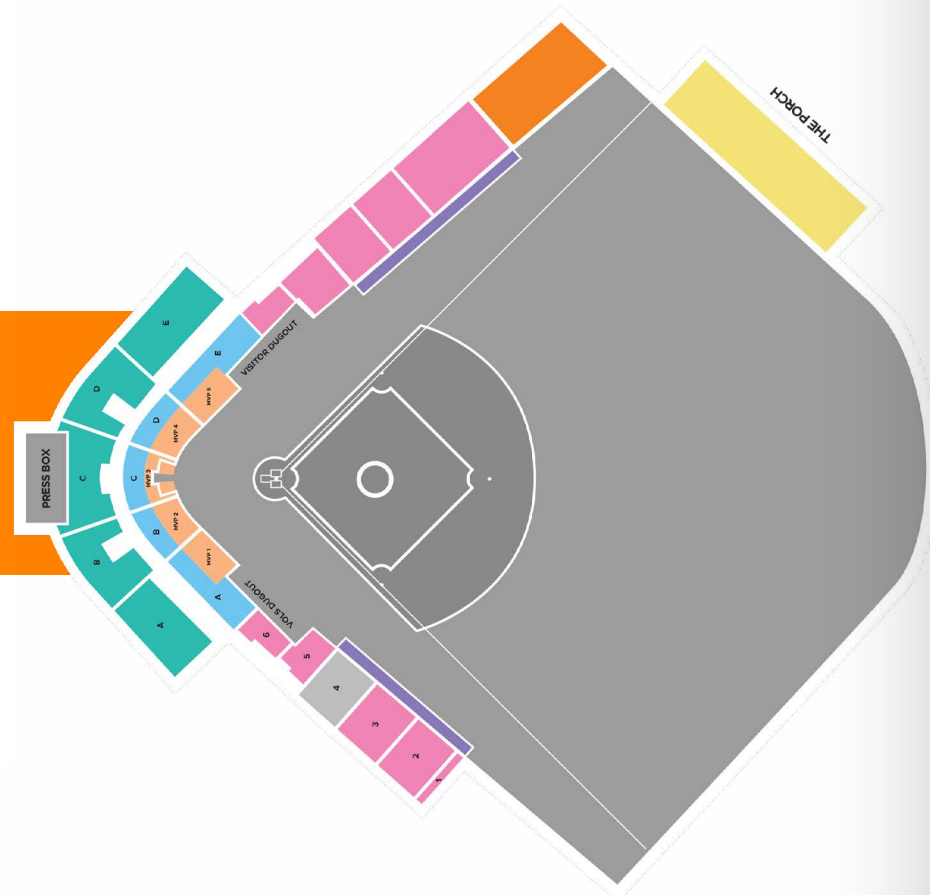
- 3 Parking Location Lock**
Starting with the 2025-26 season, parking locations will be locked-in for three consecutive basketball seasons. Donors will "renew" their parking pass for the 2026-27 and 2027-28 seasons, and we will go through the donor selection process for the 2028-29 season.

For more information on the basketball parking process, please visit www.tennesseefund.org/2024-basketball-parking/

2024 BASEBALL & SOFTBALL



BASEBALL				
SECTION	TICKET	LICENSE	CONTRIBUTION	TOTAL
PORCH	\$3,700	--	\$16,300	\$20,000
4TOPPS	\$750	--	\$2,750	\$3,500
MVP	\$185	\$800	\$1,265	\$2,250
FIELD LEVEL	\$185	--	\$815	\$1,000
CHAIRBACKS (BELOW)	\$185	--	\$565	\$750
CHAIRBACKS (ABOVE)	\$185	--	\$315	\$500
RESERVED SEATING	\$185	--	\$100	\$285
STUDENT SECTION				



SOFTBALL				
SECTION	TICKET	CONTRIBUTION	TOTAL	
PORCH	\$1,850	\$5,500	\$7,350	
CHAIRBACK	\$95	\$150	\$245	
BLEACHER	\$95	--	\$95	

Prices listed include the season ticket cost and the required seat contribution to the Baseball or Softball priority fund. Contributions tied to season tickets are not tax deductible.

Ticket prices do not include state and local sales tax and city amusement tax. Total taxes equate to 13.75% of a ticket price and are added to the ticket price at the time of purchase.

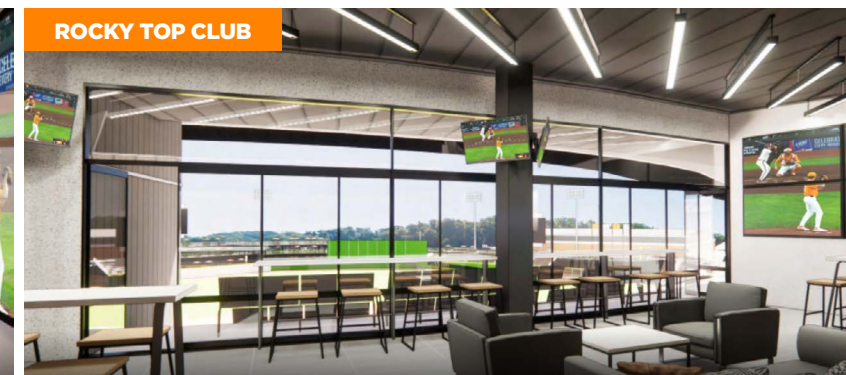
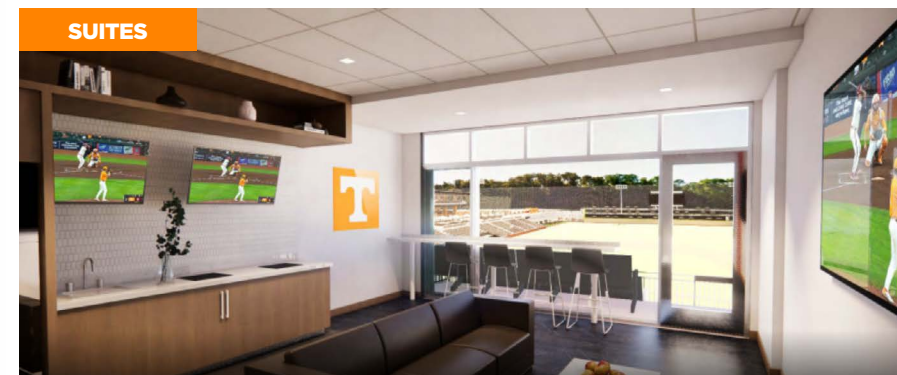
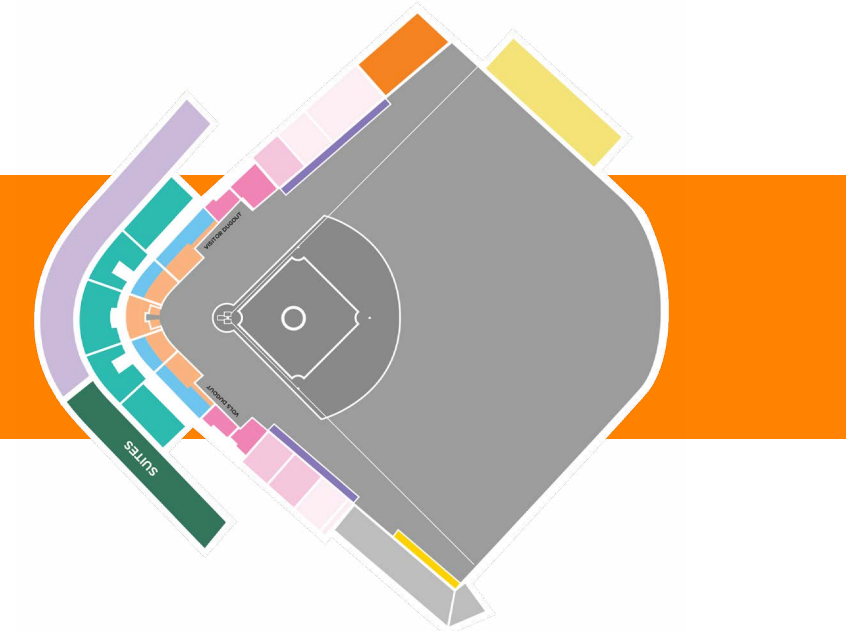
Contact the Tennessee Fund at tnfund@utk.edu for parking information.

COMING SOON

LINDSEY NELSON STADIUM

Through the multi-year construction process, Lindsey Nelson Stadium will transform into one of the most premier college baseball venues in the country. The stadium will have world-class player development areas, a projected capacity increase to 7,750+, wider concourses, more concession stands and restrooms, and new luxurious premium seating. Once completed, the new home of Vol Baseball will aim to provide a world-class experience for current and future Volunteer student-athletes and fans alike.

BASEBALL			
SECTION	TICKET	CONTRIBUTION	TOTAL
PORCH	\$4,000	\$21,000	\$25,000
PREMIUM 4TOPPS	\$800	\$7,200	\$8,000
4TOPPS	\$800	\$3,200	\$4,000
MVP	\$200	\$2,550	\$2,750
ROCKY TOP CLUB	\$200	\$2,400	\$2,600
FIELD LEVEL	\$200	\$2,300	\$2,500
CHAIRBACKS (BELOW)	\$200	\$1,050	\$1,250
CHAIRBACKS (ABOVE)	\$200	\$800	\$1,000
CHAIRBACKS	\$200	\$550	\$750
CHAIRBACKS	\$200	\$300	\$500
CHAIRBACKS	\$200	\$150	\$350
STUDENT SECTION			



As we deliver brand new premium seating options within Lindsey Nelson Stadium, philanthropic capital investments will assist in our funding model. As such, one-time capital gifts will increase donor rank and priority and may be involved with purchase of season tickets in this location. If you would like more information on baseball premium seats, please contact the Tennessee Fund at tnfund@utk.edu.

PLANNED GIVING

CREATE A LEGACY THAT SUPPORTS TENNESSEE ATHLETICS

Legacy gifts, or planned gifts, to the University of Tennessee offer donors the option of making a lasting impact on the Vols and Lady Vols either now or, most often, in the future. Some of the various ways donors can make planned gifts to the university include but are not limited to:



- 1. Bequest:** Designate the “University of Tennessee Foundation, for benefit of Tennessee Athletics” as a beneficiary of your estate by will or trust.
- 2. Retirement Plan Assets:** Contact your plan administrator to name “University of Tennessee Foundation, for benefit of Tennessee Athletics” beneficiary of all or a portion of your unused retirement assets such as a gift from your IRA, 401(k), 403(b), pension or other tax-deferred plan.
- 3. IRA Rollover:** Transfer up to \$100,000 per year from an IRA to satisfy the required minimum distribution for the year (eligible if 70 1/2 years or above).
- 4. Gifts of Real Estate**

Funds from planned gifts ensure the ability to fulfill our long-term vision through support of scholarships, endowments, facility improvements, and other support funds. University of Tennessee alumni and friends who are dedicated to the continued success of Tennessee student-athletes can make a lasting imprint on the program by contributing to Tennessee Athletics through various avenues of planned giving.

Please call the Tennessee Fund directly at (865)-974-1218 or email Maddie Burns at mburns30@utk.edu with additional questions. Additional information can be found at <https://giftplanning.utk.edu>.

1 NAME, IMAGE AND LIKENESS

Support our student-athletes through name, image, and likeness (NIL) opportunities by partnering with them for endorsements, appearances, and meet greets, purchasing their NIL merchandise, or joining our local NIL collectives: The Volunteer Club sponsored by SPYRE Sports and the Lady Vol Boost (HER) Club. To learn more about collectives or how you can give to our student-athletes’ NIL efforts, please contact the Tennessee Fund at tnfund@utk.edu.

2 MY ALL ANNUAL GIVING

Philanthropic gifts made to the My All Campaign impact each of Tennessee’s 20 varsity athletic programs by providing championship resources to support student-athletes’ academic and competitive pursuits. Campaign funds will ultimately allow for strategic investments impacting every athletic program on campus. Gifts are 100% tax-deductible as they are philanthropic gifts not tied to season tickets.

3 SPORT-SPECIFIC GIVING

Gifts made to a sport-specific excellence fund directly enhance the lives of the team’s student-athletes by funding team-specific needs and ultimately allowing our student-athletes to achieve their academic and athletic pursuits. These gifts are utilized at the discretion of each head coach in conjunction with the sport administrator.

4 PLANNED GIVING & ENDOWMENT SOCIETY

Tennessee Always invites you to be a part of our team and support Tennessee Athletics by thoughtful estate planning and through our endowment program. Your membership not only encourages our student-athletes today, but can create opportunities for generations to come. Many planned gifts allow you to receive substantial tax advantages and other unique benefits while giving generous support to the University’s athletic programs.

Additional information can be found at <https://giftplanning.utk.edu>

MORE WAYS TO GIVE

OTHER GIVING OPTIONS

- Gifts Of Appreciated Assets
- Charitable Gift Annuity
- Bequests/Living Trusts
- Retained Life Estate
- Charitable Remainder Trust
- Life Income Gifts
- Endowments

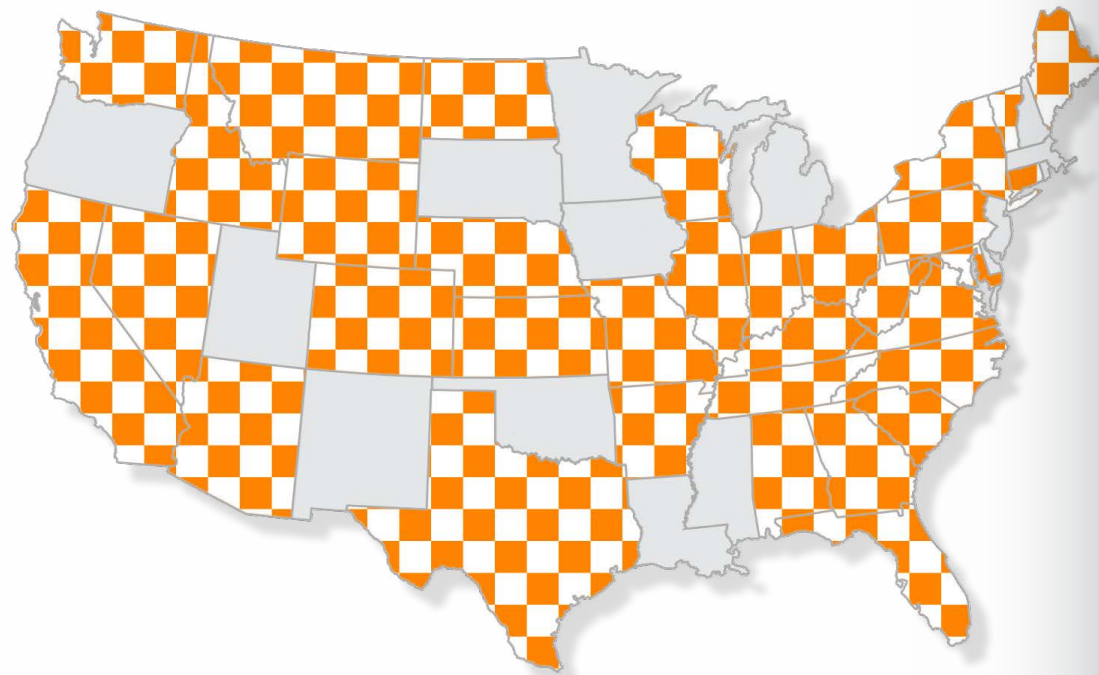


WHERE ARE SHAREHOLDERS SOCIETY MEMBERS LOCATED?



For more information on how to join the Shareholders Society, email Patrick Crowley at pcrowley@tennessee.edu.

HELP US CHECKERBOARD ALL 50 STATES!



TENNESSEEFUND



MEET THE TEAM

- Brady Hart** Executive Associate Athletics Director of Development
- Matt Kommer** Senior Associate Athletics Director, Major Gifts
- Mitchell White** Associate Athletics Director of Development, Annual Fund
- Megan Kain** Assistant Athletics Director of Development, Annual Fund
- Patrick Crowley** Assistant Athletics Director of Revenue, Strategy & Analytics
- Ally Shortt** Director of Internal and Financial Operations
- Elizabeth Coughlin** Director of Special Events & Hospitality
- JaVonte' Ashford** Director of Development, Major Gifts
- Carter Young** Director of Development, Major Gifts
- Alec Bartow** Associate Director of Development, Major Gifts
- Steve Hamer** Associate Director of Development, Major Gifts/Director of Letterwinner Relations
- Candra Howell** Associate Director, Signature Events & Donor Experience
- Brittney Larkin** Associate Director, Stewardship & Donor Experience
- Maddie Burns** Associate Director of Development, Annual Giving
- Jake Robbins** Associate Director of Development, Annual Giving
- Tyler Rohrbaugh** Associate Director of Development, Annual Giving
- Kellen Blanchett** Assistant Director of Development, Major Gifts
- Mike Nguyen** Assistant Director of Development, Letterwinner Relations
- Chloe McClish** Assistant Director of Special Events & Hospitality
- Henry Powell** Assistant Director of Special Events & Hospitality
- Reid Wheeler** Assistant Director of Special Events & Hospitality
- Melissa Barr** Development Assistant
- Tina Haun** Development Assistant
- Jeff Kmiecinski** Major Gift Assistant
- Abbey Cornelius** Development Assistant, Annual Fund

“PLAYING BY THE RULES”

NCAA COMPLIANCE

Tennessee Athletics and individuals affiliated with the department, including Tennessee Fund members, are governed by the rules and regulations of the National Collegiate Athletic Association (NCAA) and the Southeastern Conference (SEC). Ensuring compliance with NCAA and SEC rules is a top priority for Tennessee Athletics. Compliance is everyone's responsibility, especially for our members. Rule violations involving members may adversely impact the eligibility of current student-athletes as well as prospective student-athletes (recruits). Additionally, violations involving members may prevent any future association with Tennessee Athletics. Your participation and acceptance of benefits and privileges available from Tennessee Athletics is your acknowledgement and agreement to abide by the rules and regulations of the NCAA, SEC and Tennessee Athletics.

The Tennessee Athletic Compliance Office serves as a resource for everyone affiliated with Tennessee Athletics. If you have questions or concerns, please contact the Compliance Office at (865) 974-3871 or utcompliance@utk.edu.



TENNESSEEFUND.ORG | ALLVOLS.COM | UTSPORTS.COM



TENNESSEE ATHLETICS

Phone 865.974.1218

Email tnfund@utk.edu

MAILING ADDRESS

Tennessee Fund
P.O. Box 15016
Knoxville, TN
37901-5016

*Checks payable to:
University of Tennessee*

SHIPPING ADDRESS

Brenda Lawson Athletic Center
Tennessee Fund
1551 Lake Loudoun Blvd
Knoxville, TN
37996

UT FOUNDATION

EIN: 62-1844686
1525 University Avenue
Knoxville, TN
37921