

TENNESSEEFUND

2023 MEMBERSHIP GUIDE



RISE GLORIOUS

CONTENTS

3	WELCOME
4	WHY GIVE?
5	WHAT'S YOUR IMPACT?
6	SHAREHOLDERS SOCIETY
8	FOOTBALL SEASON TICKETS
10	FOOTBALL PARKING & MAP
12	BASKETBALL SEASON TICKETS
14	BASEBALL & SOFTBALL SEASON TICKETS
16	PLANNED GIVING
17	MORE WAYS TO GIVE
19	MEET THE TEAM



FEBRUARY

- DEADLINE FOR 2023 FOOTBALL SEASON-TICKET RENEWAL

MARCH

- VOLS AND LADY VOLS BASKETBALL SEASON-TICKET RENEWAL PROCESS BEGINS
- FOOTBALL SEASON-TICKET RELOCATION AND UPGRADE PERIOD

APRIL

- FOOTBALL PARKING PROCESS STARTS

JUNE

- DEADLINE FOR 2023-24 VOLS AND LADY VOLS BASKETBALL SEASON-TICKET RENEWAL

AUGUST

- FOOTBALL SEASON-TICKETS AND PARKING DISTRIBUTED

SEPTEMBER

- BASKETBALL PARKING PROCESS STARTS
- FOOTBALL SEASON-TICKET RENEWAL PROCESS BEGINS

OCTOBER

- VOLS AND LADY VOLS BASKETBALL SEASON-TICKETS AND PARKING DISTRIBUTED
- BASEBALL AND SOFTBALL SEASON-TICKET RENEWAL PROCESS BEGINS

NOVEMBER

- BIG ORANGE GIVE
- DEADLINE FOR 2023 BASEBALL AND SOFTBALL SEASON-TICKET RENEWAL

DECEMBER

- YEAR-END GIFT DEADLINE

VOL NATION,



Thank you for your passion, loyalty and investment in Tennessee Athletics. Our 18,000+ Tennessee Fund donors continue to provide the resources needed for our 585 student-athletes and elite roster of coaches to chase SEC and national championships. You are our differentiator!

At Tennessee, we provide a world-class academic and athletic experience to all of our Vols and Lady Vols. During the 2021-22 fiscal year, Tennessee student-athletes posted remarkable academic achievements, including a record 3.27 overall GPA. We saw 372 of our student-athletes earn a spot on the SEC Academic Honor Roll, while 190 student-athletes made the Dean's List. In that same span, Tennessee captured five SEC championships! By investing in Tennessee student-athletes, you are contributing to academic achievement and competitive excellence while simultaneously investing in our next generation of leaders.

We are committed to making Tennessee a top destination for student-athletes and fans alike. Rise Glorious, the strategic plan for Tennessee Athletics, will enhance this effort by serving as a roadmap for accomplishing our mission of "leading the way in college sports." Over the next five years, we will pursue an ambitious \$500-million fundraising goal through the My All Campaign. We will always encourage all Tennessee supporters to keep "giving their all" by purchasing season tickets, making an annual donation or joining our prestigious Shareholders Society. Give your all in whatever way is comfortable and meaningful to you. As we transform this athletic department and return to the pinnacle of the college sports world, we need everyone to commit to giving their all. In turn, we will provide the best possible student-athlete experience for all 20 of our programs.

I know I speak for our entire athletics department when I say how grateful we are for all you have done-and continue to do-to advance Tennessee Athletics. We appreciate your unwavering support as we chase SEC and national championships, build world-changing leaders and lead the way in college sports!

- DR. DANIEL J. WHITE

VICE CHANCELLOR AND DIRECTOR OF ATHLETICS

WHY GIVE?

585 ACTIVE
STUDENT-ATHLETES

23 TEAM NCAA
CHAMPIONSHIPS

205 TEAM CONFERENCE
CHAMPIONSHIPS

20 SPORTS

93% 4-YEAR
GRADUATION RATE

372 SEC ACADEMIC HONOR
ROLL MEMBERS IN
2021-22

HOURS OF LEADERSHIP
DEVELOPMENT TRAINING

VOLUNTEER HOURS

STUDENT-ATHLETES
CONFIRMED TO HAVE
POST-GRAD PLANS IN
2021-22

*Grad school or full-time jobs,
military, medical school or
full-time internship*

3,870

3,000

96%

WHAT'S YOUR IMPACT?

SCHOLARSHIP* **\$53,182.66**

TRAVEL **\$31,019.05**

EQUIPMENT **\$9,231.38**

SPORTS MEDICINE/MENTAL HEALTH **\$6,749.80**

STUDENT-ATHLETE STIPEND** **\$7,333.30**

ACADEMIC ACHIEVEMENT AWARD **\$5,980.00**

ACADEMIC SUPPORT **\$4,688.37**

NUTRITION **\$6,859.09**

STRENGTH & CONDITIONING **\$3,493.41**

SPORTS SCIENCE **\$230.26**

**Includes tuition, room and board*

***Includes summer school*

Data based on the following projections: Average student-athlete expenses for FY22-23 based on 585 total student-athletes and 276.13 scholarships (80% out-of-state, 20% in-state).

STUDENT-ATHLETE EXPERIENCE

AVERAGE ANNUAL INVESTMENT

TOTAL AVERAGE:

\$128,767.32

To compete nationally, the University of Tennessee must ensure that the top in-state recruits are choosing to play for the Volunteers and Lady Volunteers, while also attracting the best national recruits.

With scholarship costs rising nationally, it is imperative that the Tennessee Fund increases both memberships and gifts to cover these costs. Every member and dollar count toward making the student-athlete dream become a reality. The education and life lessons our student-athletes receive are priceless. Please consider increasing your gift or referring a friend to the Tennessee Fund.

HOW ARE YOUR ANNUAL FUND CONTRIBUTIONS SPENT?

Seat-based and parking-based priority fund contributions primarily help in funding the day-to-day operations of the athletic department and its 20 sport programs. Priority fund seat contributions tied to season tickets support in funding the total cost of providing a first-class experience for Tennessee student-athletes. The expenses covered by priority seat contributions include student-athlete scholarships, academic support, travel, strength & conditioning, mental health resources, and many more necessities to ensure our student-athletes are achieving at the highest levels in the classroom and in competition.

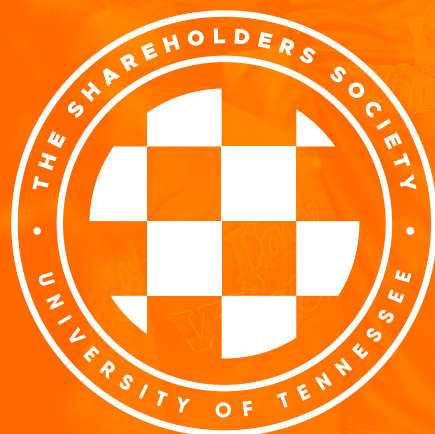
THE **MYALL** CAMPAIGN

The My All Campaign aims to impact each of Tennessee's 20 varsity athletic programs by providing championship resources to support student-athletes' academic and competitive pursuits. Specific facility enhancements are currently targeted for Neyland Stadium, Anderson Training Center and Lindsey Nelson Stadium, though campaign funds will ultimately allow for strategic investments impacting every athletic program on campus.

IWILLGIVEMYALL.COM

865.974.1218

TNFUND@UTK.EDU



THE SHAREHOLDERS SOCIETY

Established in 2021, the Shareholders Society is the exclusive philanthropic giving society for Tennessee Athletics. This group of generous and committed donors provide critical financial support for our student-athletes and coaches, helping enhance their experience at Tennessee through philanthropy.

Commitments to the Shareholders Society will be used to fund new athletic facility construction, as well as existing facility enhancements/renovations. Through their generosity and transformational support, Society members will bolster Tennessee's championship capacity across all 20 varsity sports.

Since founded, the Shareholders Society has grown to more than 400 members. As Tennessee Athletics aims to lead the way in all aspects of college sports, we intend to continue growing this Society and utilizing this exclusive group of philanthropic leaders to transform our athletic department.

SHAREHOLDERS SOCIETY UNIQUE EXPERIENCES



SHAREHOLDERS MEMBERSHIP BENEFITS

Society members with five-year commitments will be appropriately stewarded with exclusive, unique engagement opportunities commensurate with their level of giving. *Benefits may include, but are not limited to:*

- Access to exclusive events
- Pregame/in-game field passes
- Branded society gear
- Opportunities to attend practices
- Annual Society trip to away games
- Accelerated donor points
- 100% tax-deductible gifts

FIVE-YEAR LEADERSHIP COMMITMENT LEVELS

\$25,000	\$50,000	\$100,000	\$250,000	\$500,000	\$1,000,000
1.5 points/\$100	1.5 points/\$100	2 points/\$100	2 points/\$100	3 points/\$100	3 points/\$100

PRIORITY POINT ESCALATOR

To inquire about joining the Shareholders Society, please contact Patrick Crowley at pcrowley@tennessee.edu.



FOOTBALL

SEASON TICKET INFORMATION



Prices listed include the season ticket cost and the required seat contribution to the football priority fund. Contributions tied to season tickets are not tax deductible.

Ticket prices do not include state and local sales tax and city amusement tax. Total taxes equate to 13.75% of a ticket price and are added to the ticket price at the time of purchase.

PREMIUM				
SECTION	TICKET	LICENSE	CONTRIBUTION	TOTAL
WEST CLUB	\$450	\$400	\$4,650	\$5,500
EAST CLUB	\$450	\$400	\$3,650	\$4,500
TERRACE	\$450	\$150	\$2,500	\$3,100
TERRACE	\$450	\$150	\$1,850	\$2,450
LOWER WEST CLUB	\$450	\$150	\$4,000	\$4,600

STANDARD			
SECTION	TICKET	CONTRIBUTION	TOTAL
WEST CHAIR	\$450	\$1,500	\$1,950
WEST MIDFIELD BLEACHER	\$450	\$1,500	\$1,950
EAST MIDFIELD/ WEST SIDE BLEACHER	\$450	\$750	\$1,200
LOWER/ UPPER	\$450	\$150	\$600
UPPER	\$450	\$50	\$500
UPPER SOUTH	\$450	--	\$450
FAMILY SECTION	\$300	--	\$300
DECK	\$600	\$1,350	\$1,950
STUDENT SECTIONS			
VISITORS SECTIONS			

These contribution amounts do not guarantee seats in Neyland Stadium. The listed annual contribution levels are to provide new Tennessee Fund members with an idea of the approximate amount required to sit in a specific section. All prices listed include a season ticket and any additional contribution cost. Seating locations are subject to change as needed due to future renovations of Neyland Stadium. In addition, the cost of season tickets may vary on an annual basis.

Premium seating options within Neyland Stadium may involve a philanthropic capital investment. One-time capital gifts will increase donor rank and priority. If you would like more information on football premium seats, please contact the Tennessee Fund at tnfund@utk.edu.

Not all sections require a per-seat contribution. To inquire about these areas, please call the Ticket Office at (865) 656-1200.

NEYLAND STADIUM

PREMIUM SEATING

Premium seating at the University of Tennessee is a great way to take a leadership role in supporting the Vols while enjoying the best seats in Neyland Stadium.

We anticipate many of our premium seating areas to be sold out for the 2023 season. To inquire about availability or to join a premium seating waitlist, please email tnfund@utk.edu.

SKYBOX SEATING



- 16 climate-controlled seats
- Private refrigerator, wet bar and lockable cabinets
- Adjoining lounge with all-inclusive food and non-alcoholic beverages
- Elevator access

EAST CLUB/WEST CLUB SEATING



- Covered, luxurious chairback seats
- Private indoor club area
- All-inclusive food and non-alcoholic beverages
- TVs showing Tennessee Football and college football from around the country
- Elevator access
- Alcohol and spirits available for purchase

NORTH UPPER DECK



- Open-air concourse
- Sports bar feel with large wrap around bar and drink rails
- Standing Room Only tickets
- Private concessions
- Alcohol available for purchase

TENNESSEE TERRACE



- Chairback seats with cup holders & additional leg room
- Climate-controlled indoor concourse
- Expanded concession menu with TVs showing Tennessee Football and college football from around the country
- Family restrooms
- Elevator access
- Alcohol and spirits available for purchase

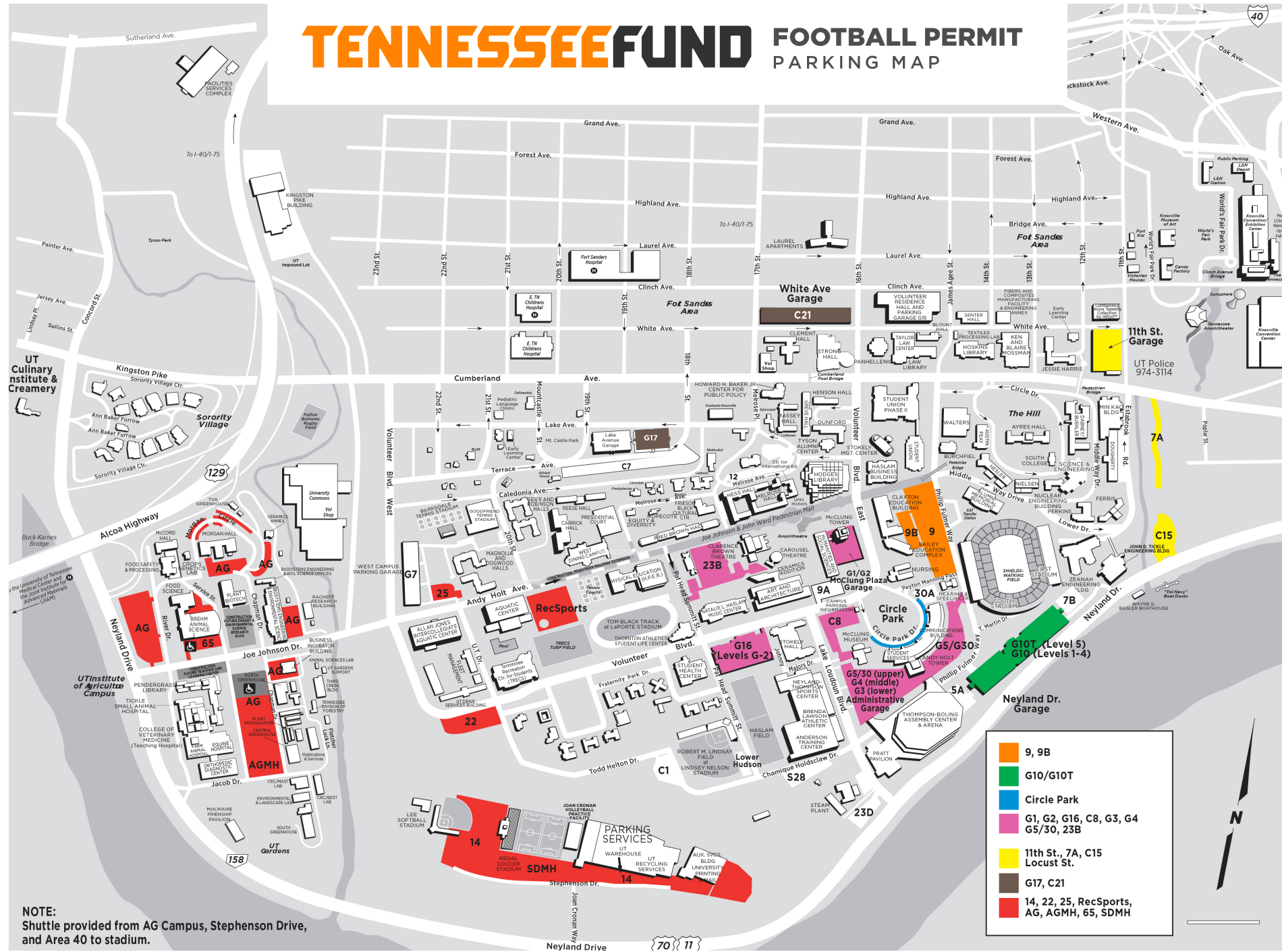
LOWER WEST CLUB



- Chairback seats with cup holders & additional leg room
- Climate-controlled indoor concourse
- Expanded food and beverage options with TVs and a bar-seating experience
- Family restrooms
- Elevator access
- Alcohol and spirits available for purchase

Premium seating options within Neyland Stadium may involve a philanthropic capital investment. One-time capital gifts will increase donor rank and priority. If you would like more information on football premium seats, please contact the Tennessee Fund at tnfund@utk.edu.

TENNESSEEFUND FOOTBALL PERMIT PARKING MAP



*Inventory is shifting and the map above may not reflect availability.



FOOTBALL PARKING

Each year, the Tennessee Fund assigns football parking passes in the following manner. First, your total football priority fund contribution level directly determines your lot priority level (as seen below). Second, your Tennessee Fund donor rank within that priority level, based on pass availability, determines if you will be allocated a pass in that lot. Members must purchase football season tickets to be eligible. Premium parking will be allocated separately. **Please be aware that no preference or previous parking assignment is guaranteed.**

To increase your total football annual-giving level, consider making a philanthropic donation to the My All Campaign. Making a My All annual gift will raise your total football annual contribution and can potentially increase your parking priority level. *Please note that parking is based on inventory and is not guaranteed with purchase of season tickets.*

For illustrative purposes, the 2022 football parking assignments by priority level and Tennessee Fund donor rank are below. Allocations are subject to change year-to-year.

LOT	PRIORITY LEVEL	2022 RANK
9	I	210
9B	I	237
Circle Park	I	251
G5/30	I	499
C8	I	507
C15	I	514
G10 Garage (Levels 1-4)	II	1159
G10T (Level 5)	II	2538
G4 Garage	II	6584
G3 Garage	II	6915
G1 Garage	III	190
23B	III	820
7A	III	994
G16 Garage (Levels G-2)	III	1767
22	III	1898
RecSports	III	2004
25	III	2020
11th Street Garage	III	4403
C21 White Ave Garage	III	5208
G17 Garage	III	8584
AG Campus	III	10231
14	III	11941
Locust St Garage	III	13260

PRIORITY I \$10,000+

PRIORITY II \$5,000-9,999

PRIORITY III \$100-4,999

ALL MEMBERS GIVING

Example: Donor A has a Tennessee Fund donor rank of 3,000 and makes a \$4,500 total seat contribution to the football priority fund. This donor is at the Priority III level for football parking and would have received the 11th Street Garage for the 2022 season. To increase the donor's priority level, Donor A would need to make an additional My All annual gift. For example, if Donor A made a \$500 philanthropic donation to the My All Campaign, the donor would have been at the \$5,000 annual giving level (Priority II) and would have been eligible for the G4 Garage.

BASKETBALL



MEN'S BASKETBALL				
SECTION	TICKET	CONTRIBUTION	TOTAL	
FLOOR - SIDECOURT	\$825	\$4,675	\$5,500	
FLOOR - ENDCOURT	\$825	\$4,175	\$5,000	
SIDECOURT	\$325	\$1,425	\$1,750	
CORNER	\$250	\$1,250	\$1,500	
ENDCOURT	\$250	\$750	\$1,000	
LEVEL 300	\$250	\$250	\$500	
LEVEL 300	\$325	--	\$325	
FAMILY SECTION, LEVEL 300	\$250	--	\$250	
STUDENT SECTION	--	--	--	



WOMEN'S BASKETBALL			
SECTION	TICKET	CONTRIBUTION	TOTAL
FLOOR	\$700	\$300	\$1,000
SIDECOURT	\$200	\$150	\$350
CORNER	\$200	--	\$200
ENDCOURT	\$100	--	\$100
STUDENT SECTION	--	--	--

Prices listed include the season ticket cost and the required seat contribution to the Men's or Women's Basketball priority fund. Contributions tied to season tickets are not tax deductible.

Ticket prices do not include state and local sales tax and city amusement tax. Total taxes equate to 13.75% of a ticket price and are added to the ticket price at the time of purchase.

Basketball parking information can be found at <https://www.tennesseefund.org/basketball-parking-map/>

PREMIUM SEATING

We anticipate all of our basketball premium seating areas to be sold out for the 2023-24 season. To inquire about availability or to join a premium seating waitlist, please email tnfund@utk.edu.

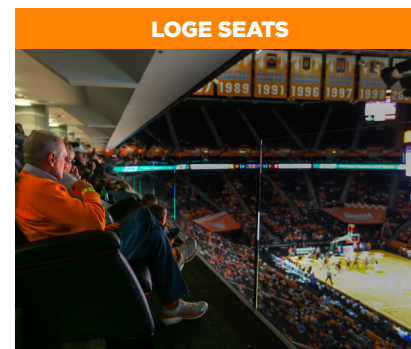
Premium seating options within Thompson-Boling Arena may involve a philanthropic capital investment. One-time capital gifts will increase donor rank and priority. If you would like more information on basketball premium seats, please contact the Tennessee Fund at tnfund@utk.edu.



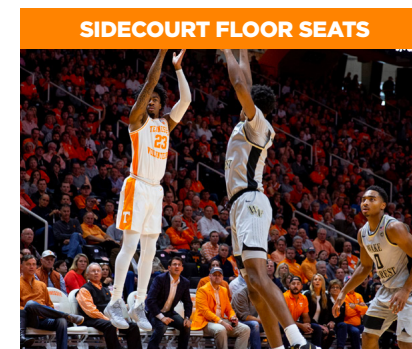
- 10, 12 or 16 seat private suites
- Includes Vols and Lady Vols parking passes
- Private refrigerator and locked cabinets & wet bar
- First opportunity to purchase suite tickets for other arena events



- Located just off the court on the east and west baselines in rows A & B
- Includes access to the Courtside Club at the Ray Mears Room
- All-inclusive food and non-alcoholic beverages



- Luxurious leather chairback seats
- Includes Vols and Lady Vols parking passes
- Wait service provided
- First opportunity to purchase loge tickets for other arena events



- Located just off the court directly across from the team benches
- Includes access to the Courtside Club at the Ray Mears Room
- All-inclusive food and non-alcoholic beverages

For illustrative purposes, the 2022-23 Vols and Lady Vols basketball parking assignments by priority level and Tennessee Fund donor rank are below. Allocations are subject to change year-to-year.

VOLS BASKETBALL PARKING

LOT	PRIORITY LEVEL	2022-23 RANK
G5/30	I	1762
G4 Garage	I	666
Circle Park	I	2582
G3 Garage	I	1346
30A	I	4009
G10 Garage	II	6201
C8	II	6333
9A	II	7216
G16 Garage	III	4323
G1 Garage	III	6719
C15	III	8946

LADY VOLS BASKETBALL PARKING

LOT	2022-23 RANK
G5/30	4623
G4 Garage	8418
G3 Garage	9804
G10 Garage	15000

PRIORITY I \$5,500+

PRIORITY II \$2,500-5,499

PRIORITY III \$100-2,499

ALL MEMBERS GIVING

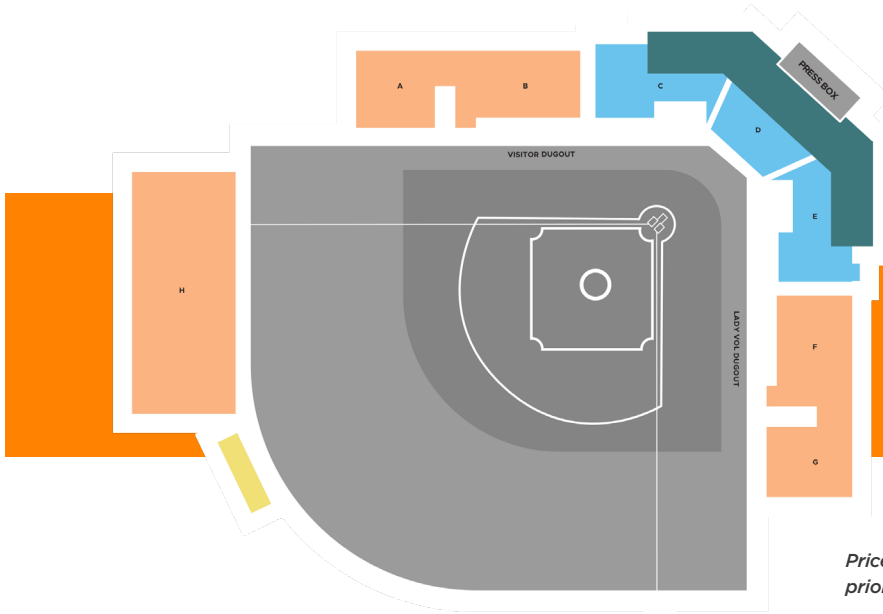
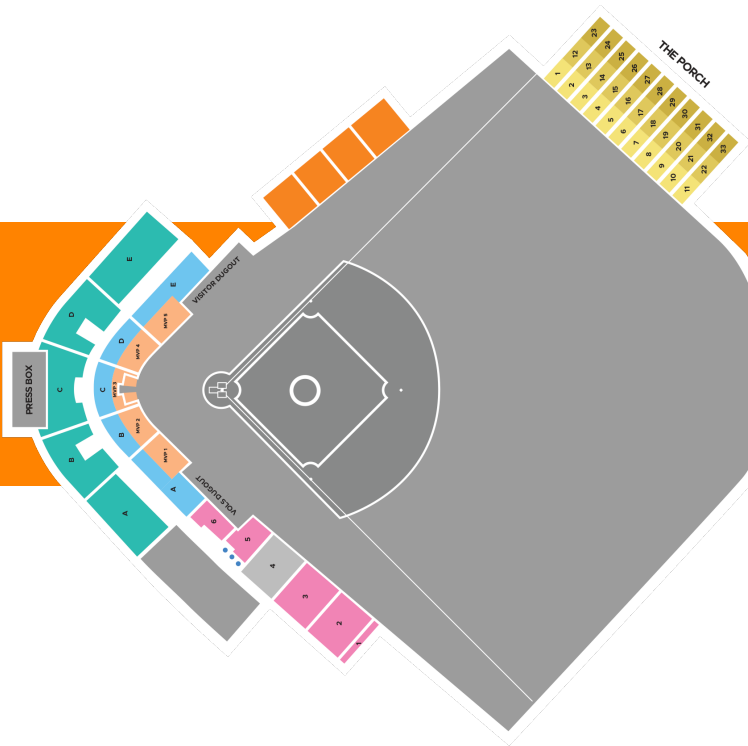
**Per-seat totals are based on annual Vols or Lady Vols basketball contributions*

Example: Donor A makes a \$2,400 required seat contribution to the football priority fund. Donor A makes a separate \$3,500 required seat contribution to the basketball priority fund. This donor is at the Priority III level for football and the Priority II level for basketball. To increase either priority level, Donor A would need to make an additional My All annual gift. This would increase both sport specific levels. For example, if Donor A made a \$2,600 philanthropic donation to the My All Campaign, the donor would now be at the \$5,000 annual giving level (Priority II) for football and at the \$6,100 annual giving level (Priority I) for basketball.

BASEBALL & SOFTBALL



BASEBALL				
SECTION	TICKET	LICENSE	CONTRIBUTION	TOTAL
LOWER PORCH	\$3,700	--	\$11,000	\$14,700
MIDDLE PORCH	\$3,700	--	\$11,000	\$14,700
UPPER PORCH	\$3,700	--	\$11,000	\$14,700
LEDGE	\$750	--	\$1,700	\$2,450
MVP	\$185	\$800	\$500	\$1,485
CHAIRBACKS (BELOW)	\$185	--	\$300	\$485
CHAIRBACKS (ABOVE)	\$185	--	\$125	\$310
RESERVED SEATING	\$185	--	--	\$185
LEFT FIELD BLEACHERS	SOLD ON A SINGLE GAME BASIS			SOLD ON A SINGLE GAME BASIS
STUDENT SECTION				



SOFTBALL			
SECTION	TICKET	CONTRIBUTION	TOTAL
PORCH	\$1,850	\$5,500	\$7,350
CHAIRBACK	\$95	\$150	\$245
BLEACHER	\$95	--	\$95

Prices listed include the season ticket cost and the required seat contribution to the Baseball or Softball priority fund. Contributions tied to season tickets are not tax deductible.

Ticket prices do not include state and local sales tax and city amusement tax. Total taxes equate to 13.75% of a ticket price and are added to the ticket price at the time of purchase.

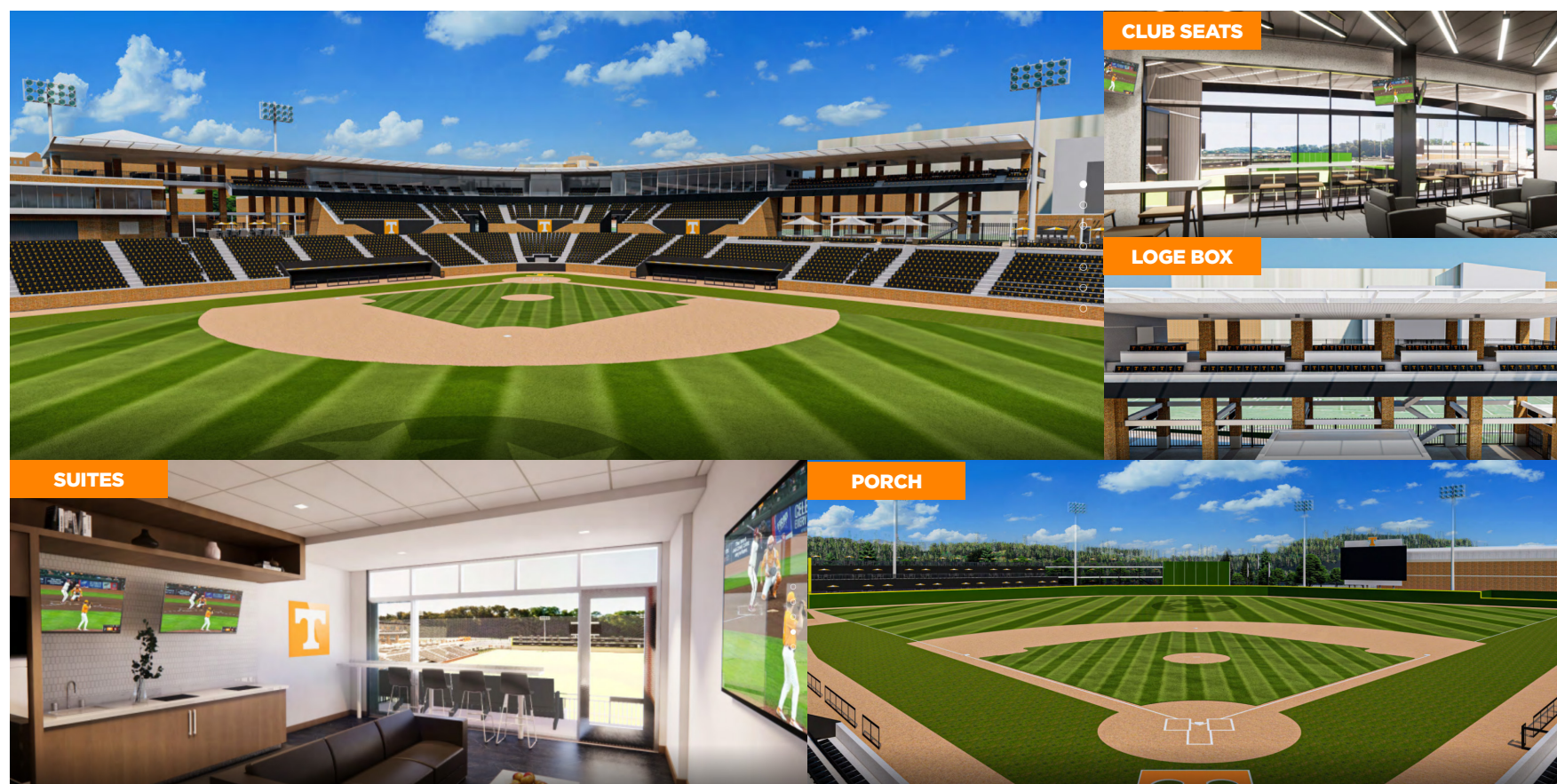
Baseball parking information can be found at <https://www.tennesseefund.org/bsb-parking-map/>

LINDSEY NELSON STADIUM

FUTURE RENOVATIONS

Tennessee Athletics is thrilled to announce upcoming facility enhancements to Lindsey Nelson Stadium at Robert M. Lindsay Field. Lindsey Nelson Stadium is set to become one of the most premier college baseball venues in the country with improved player development areas, more seating for Vol Nation, wider concourses, more concession stands and restrooms, and NEW luxurious premium seating areas. The new home of Vol Baseball will aim to provide a world-class experience for current and future Volunteer student-athletes and fans alike.

**Renovation dates are to be determined.*



As we deliver brand new premium seating options within Lindsey Nelson Stadium, philanthropic capital investments will assist in our funding model. As such, one-time capital gifts will increase donor rank and priority and may be involved with purchase of season tickets in this location. If you would like more information on baseball premium seats, please contact the Tennessee Fund at tnfund@utk.edu.



PLANNED GIVING

CREATE A LEGACY
THAT SUPPORTS
TENNESSEE ATHLETICS

Legacy gifts, or planned gifts, to the University of Tennessee offer donors the option of making a lasting impact on the Vols and Lady Vols either now or, most often, in the future. Some of the various ways donors can make planned gifts to the university include but are not limited to:

1. **Bequest:** Designate the “University of Tennessee Foundation, for benefit of Tennessee Athletics” as a beneficiary of your estate by will or trust.
2. **Retirement Plan Assets:** Contact your plan administrator to name “University of Tennessee Foundation, for benefit of Tennessee Athletics” beneficiary of all or a portion of your unused retirement assets such as a gift from your IRA, 401(k), 403(b), pension or other tax-deferred plan.
3. **IRA Rollover:** Transfer up to \$100,000 per year from an IRA to satisfy the required minimum distribution for the year (eligible if 70 1/2 years or above)
4. **Gifts of Real Estate**

Funds from planned gifts ensure the ability to fulfill our long-term vision through support of scholarships, endowments, facility improvements, and other support funds. University of Tennessee alumni and friends who are dedicated to the continued success of Tennessee student-athletes can make a lasting imprint on the program by contributing to Tennessee Athletics through various avenues of planned giving.

MORE WAYS TO GIVE

NAME, IMAGE AND LIKENESS

Support our student-athletes through name, image, and likeness (NIL) opportunities by partnering with them for endorsements, appearances, and meet and greets, purchasing their NIL merchandise, or joining our local NIL collectives: The Volunteer Club sponsored by SPYRE Sports and the Lady Vol Boost (HER) Club. To learn more about collectives or how you can give to our student-athletes' NIL efforts, please contact the Tennessee Fund at tnfund@utk.edu.

MY ALL ANNUAL GIVING

Philanthropic gifts made to the My All Campaign impact each of Tennessee's 20 varsity athletic programs by providing championship resources to support student-athletes' academic and competitive pursuits. Specific facility enhancements are currently targeted for Neyland Stadium and Anderson Training Center, though campaign funds will ultimately allow for strategic investments impacting every athletic program on campus. Gifts are 100% tax-deductible as they are philanthropic gifts not tied to season tickets.

SPORT-SPECIFIC GIVING

Gifts made to a sport-specific excellence fund directly enhance the lives of the team's student-athletes by funding team-specific needs and ultimately allowing our student-athletes to achieve their academic and athletic pursuits. These gifts are utilized at the discretion of each head coach.

PLANNED GIVING & ENDOWMENT SOCIETY

Tennessee Always invites you to be a part of our team and support Tennessee Athletics by thoughtful estate planning and through our endowment program.

Your membership not only encourages our student-athletes today, but can create opportunities for generations to come. Many planned gifts allow you to receive substantial tax advantages and other unique benefits while giving generous support to the University's athletic programs.

Additional information can be found at <https://giftplanning.utk.edu>

OTHER GIVING OPTIONS

- Gifts Of Appreciated Assets
- Charitable Gift Annuity
- Bequests/Living Trusts
- Retained Life Estate
- Charitable Remainder Trust
- Life Income Gifts
- Endowments



“PLAYING BY THE RULES”

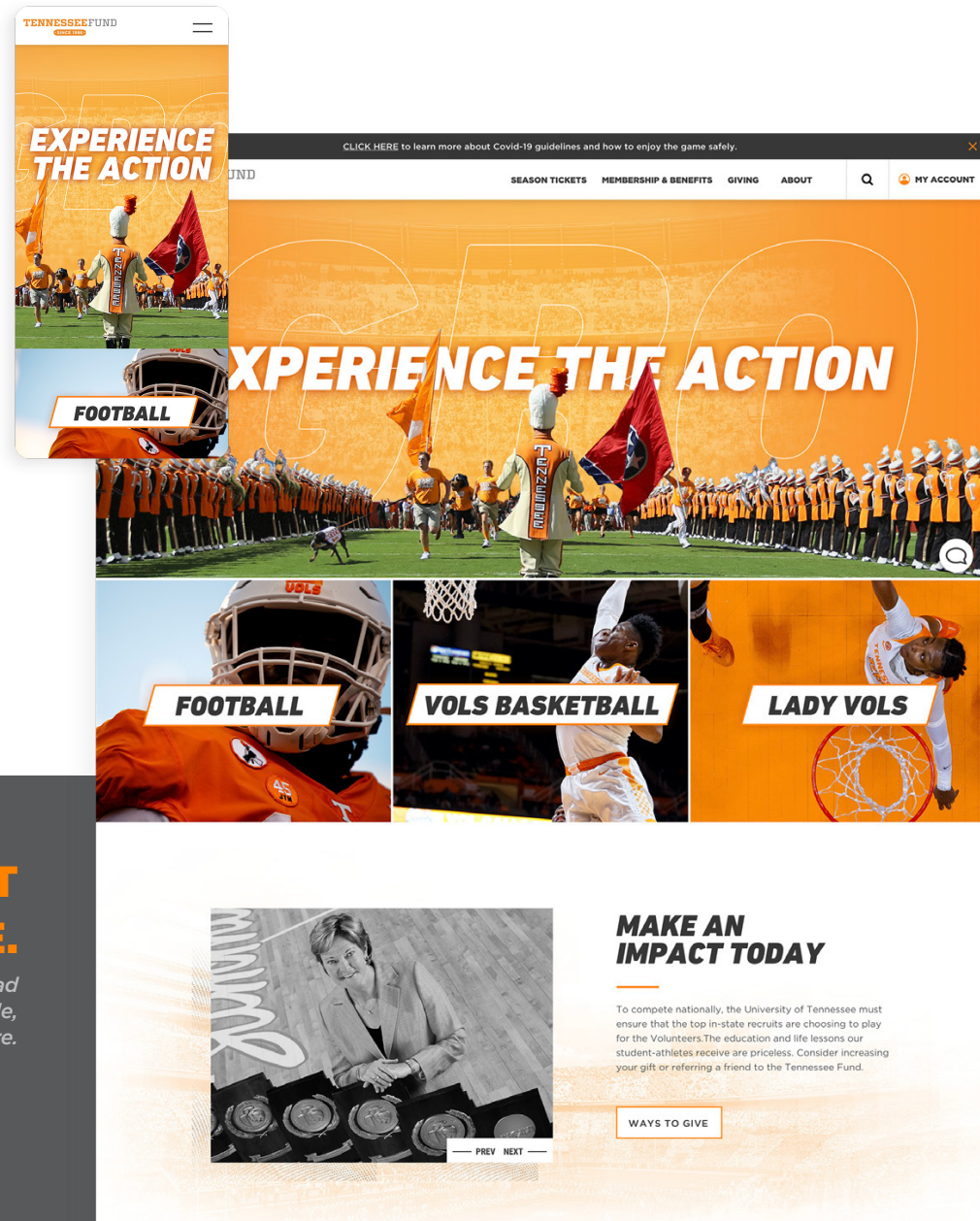
NCAA COMPLIANCE

Tennessee Athletics and individuals affiliated with the department, including Tennessee Fund members, are governed by the rules and regulations of the National Collegiate Athletic Association (NCAA) and the Southeastern Conference (SEC). Ensuring compliance with NCAA and SEC rules is a top priority for Tennessee Athletics. Compliance is everyone's responsibility, especially for our members. Rule violations involving members may adversely impact the eligibility of current student-athletes as well as prospective student-athletes (recruits). Additionally, violations involving members may prevent any future association with Tennessee Athletics. Your participation and acceptance of benefits and privileges available from Tennessee Athletics is your acknowledgement and agreement to abide by the rules and regulations of the NCAA, SEC and Tennessee Athletics.

The Tennessee Athletic Compliance Office serves as a resource for everyone affiliated with Tennessee Athletics. If you have questions or concerns, please contact the Compliance Office at (865) 974-3871 or utcompliance@utk.edu.

CHECK OUT OUR WEBSITE.

Visit tennesseefund.org to download the digital Membership Guide, access ticket information, and more.



TENNESSEEFUND



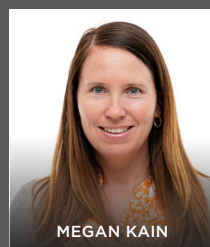
BRADY HART



MATT KOMMER



MITCHELL WHITE



MEGAN KAIN



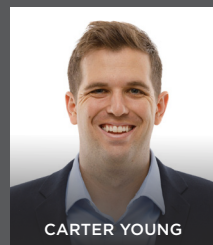
PATRICK CROWLEY



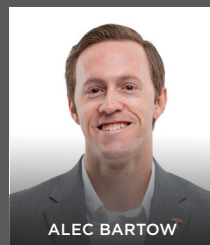
JAVONTE' ASHFORD



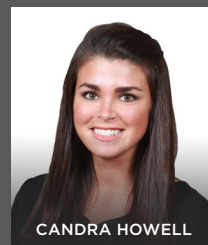
STEVE HAMER



CARTER YOUNG



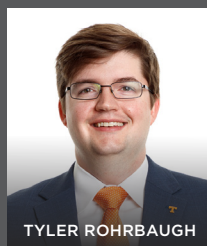
ALEC BARTOW



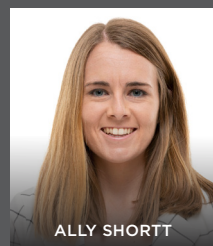
CANDRA HOWELL



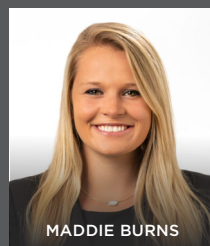
KELLEN BLANCHETT



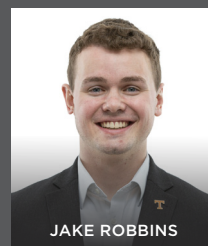
TYLER ROHRBAUGH



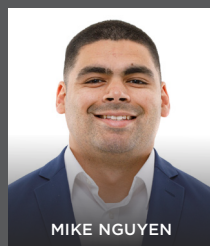
ALLY SHORTT



MADDIE BURNS



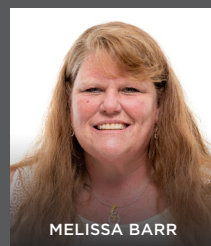
JAKE ROBBINS



MIKE NGUYEN



TINA HAUN



MELISSA BARR



GRAYSON MILLER

MEET THE TEAM

Brady Hart

Executive Associate Athletics Director of Development

Matt Kommer

Senior Associate Athletics Director, Major Gifts

Mitchell White

Associate Athletics Director of Development, Annual Fund

Megan Kain

Assistant Athletics Director of Development, Annual Fund

Patrick Crowley

Assistant Athletics Director of Revenue, Strategy & Analytics

JaVonte' Ashford

Director of Development, Major Gifts

Steve Hamer

Associate Director of Development, Major Gifts/Director of Letterwinner Relations

Carter Young

Associate Director of Development, Major Gifts

Alec Bartow

Associate Director of Development, Major Gifts

Candra Howell

Associate Director, Signature Events & Donor Experience

Kellen Blanchett

Assistant Director of Development, Major Gifts

Tyler Rohrbaugh

Assistant Director of Development, Annual Fund

Ally Shortt

Assistant Director of Development, Internal Operations

Maddie Burns

Assistant Director of Development, Annual Giving

Jake Robbins

Assistant Director of Development, Annual Giving

Mike Nguyen

Assistant Director of Development, Letterwinner Relations

Tina Haun

Development Assistant

Melissa Barr

Development Assistant

Grayson Miller

Development Assistant

TENNESSEEFUND.ORG | ALLVOLS.COM | UTSPORTS.COM



TENNESSEE ATHLETICS

Phone 865.974.1218

Email tnfund@utk.edu

MAILING ADDRESS

Tennessee Fund
P.O. Box 15016
Knoxville, TN
37901-5016

*Checks payable to:
University of Tennessee*

SHIPPING ADDRESS

Brenda Lawson Athletic Center
Tennessee Fund
1551 Lake Loudoun Blvd
Knoxville, TN
37996

UT FOUNDATION

EIN: 62-1844686
1525 University Avenue
Knoxville, TN
37921